



Hardscape List

TEXAS  WATER
C O M P A N Y 

Make Every Drop Count. 

What is hardscaping?

A **hardscape** is a design that uses natural & man-made, non-living materials.

Why should I consider hardscaping?

Hardscapes can help conserve water because it's one less area of your yard that you need to irrigate! Choosing permeable materials for your hardscape project, allows water to flow into the ground, which is then taken up by plants or seeps into local aquifers. Hardscaping can help you save money on your water bill and increase your property value.

Are there different types?

Yes! You'll be provided with more detail on the following types:

1. **Permeable Pavement**
2. **Organic Mulch**
3. **Inorganic Mulch**

How will I know which one to use?

When considering which **hardscape** is right for you, it is best to determine your goals beforehand, such as growing a vegetable garden, an aesthetically pleasing lawn, area of placement, and what function you want your hardscape to serve.

Note: This list of examples is not exhaustive. Consider consulting with a landscape professional or doing additional research to find the best solution for your home or business.

1. Permeable Pavement



- Sustainable
- Naturally filters out water pollutants
- Lowers flash flood risk
- Eliminates costly drainage system
- Reduces subsidence
- Lowers temperatures

Porous Asphalt



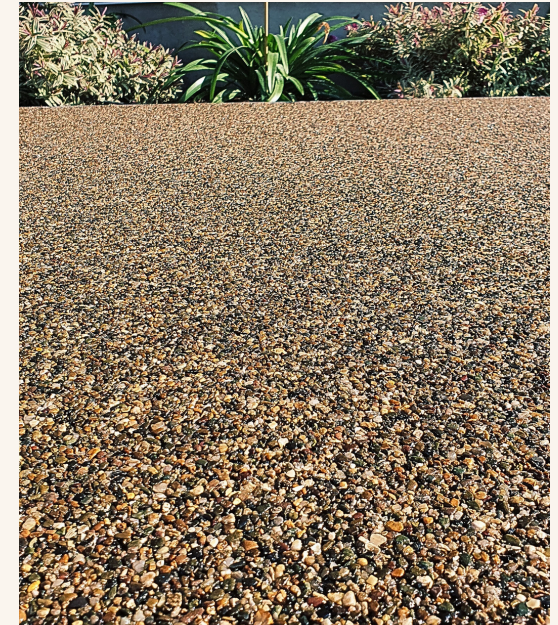
- ✓ Environmentally friendly
- ✓ Dramatically reduces puddling
- ✓ Replenishes your water table
- ✗ Long lifespan but shorter than regular asphalt.
- ✗ Requires experienced contractors to be installed correctly.

Permeable Concrete



- ✓ Long lifespan
- ✓ Well suited for low-mid traffic areas
- ✓ Provides a healthier environment to grow trees & plants
- ✓ More Accessable for people with mobility aids (Wheelchairs or walkers ect.)
- ✗ Certain soil requirements for best effect

Resin Bound Surfacing



- ✓ Non-slip
- ✓ Ice & frost resistant
- ✓ Low maintenance
- ✓ Long lifespan
- ✗ Susceptible to weed & moss growth



2. Organic Mulch

- Suppresses weeds
- Reduces winter injury
- Retains moisture & nutrients
- Less topsoil erosion
- Reduces water bill
- Sustainable landscaping

Cypress



- ✓ Maintains the soil's natural pH as it decomposes
- ✓ Excellent pest deterrent
- ✗ Can prevent water from reaching soil

Pecan Shell



- ✓ Cools soil in the summer
- ✓ Decomposes slowly
- ✓ Good for acid loving plants such as azaleas, hydrangeas, lavender, ect.
- ✗ No nutritional benefit for the soil

Dry Grass Clippings



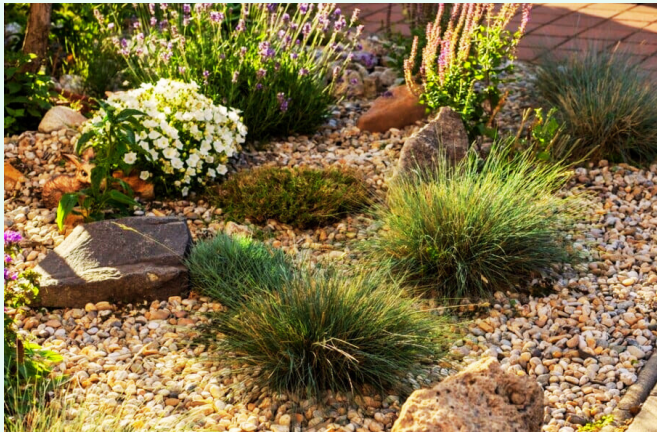
- ✓ FREE! Use the leftover cut grass when you mow.
- ✓ Good source of nitrogen & humus
- ✓ Great for vegetables & no need for extra nutrients
- ✗ Attracts slugs
- ✗ Not suitable if lawn contains weeds, chemicals or synthetic fertilizers



3. Inorganic Mulch

- Suppresses weeds
- Reduces water bill
- Low maintenance
- Maintains even soil temperature
- Aesthetically pleasing

Rock / Gravel

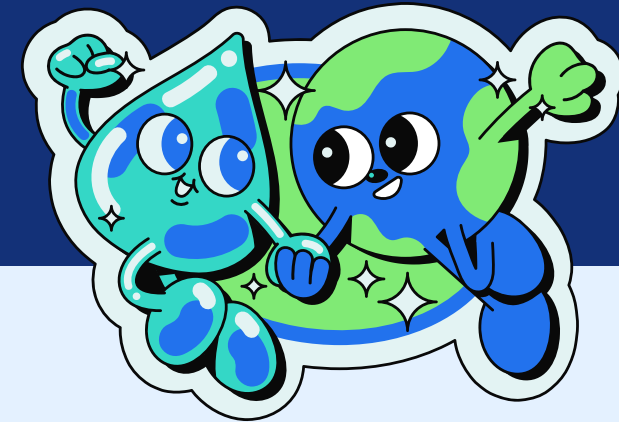


Landscape Fabric



This list of examples is not exhaustive. Consider consulting with a landscape professional or doing additional research to find the best solution for your home or business.

TEXAS WATER
COMPANY



Make Every Drop Count.

- ✓ Suppresses weeds when used with lawn fabric.
- ✓ Doesn't decompose
- ✓ Minimizes pest problems
- ✗ Only suitable for plants that can tolerate hot & dry environments.
- ✗ Does not retain moisture or nutrients.

- ✓ Reduces use of toxic weed killers
- ✓ Reduces moisture evaporation
- ✗ Time consuming around existing plants & difficulty replanting
- ✗ Can compact soil if not maintained