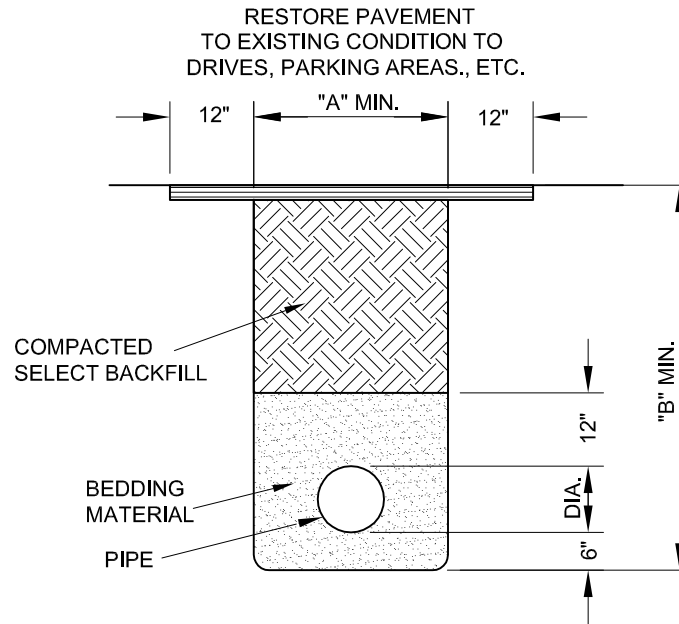


PIPE DIA.	WIDTH "A"	DEPTH "B"
4"	16"	36"
6"	24"	40"
8"	24"	44"
12"	30"	52"
16"	36"	56"
>16"	DIA. + 24"	DIA. + 40"



NOTES:

1. SEE CLWSC STANDARD SPECIFICATIONS FOR NOTES CONCERNING BEDDING AND COMPACTION.
2. ALL TRENCHES UNDER OR WITHIN 5 FEET OF PAVEMENT OR STRUCTURES TO BE FILLED IN MAXIMUM 8-INCH LIFTS COMPACTED TO 95% STANDARD PROCTOR DENSITY. TRENCHES IN OTHER AREAS ARE TO BE COMPACTED TO THE DENSITY OF THE ADJACENT UNDISTURBED SOIL.
3. SEE STANDARD DETAIL "MAIN-CC" FOR CONCRETE CAP OVER SHALLOW PIPE.

GENERAL NOTES:

BY	REVISION	DATE	CK	AP	OPS



CANYON LAKE
WATER SERVICE COMPANY
1399 Sattler Road
Canyon Lake, Texas 78133
(830) 964-3854

TYPICAL TRENCH DETAIL

BY: M.HOMER	OPERATIONS / DATE
DATE: 07 Dec 17	
CK:	ENGINEERING / DATE
SCALE: NONE	DIRECTOR OF ENGINEERING / DATE

REF. NOS.

DWG. NO.
MAIN-TRN

SHEET:
1 OF 1