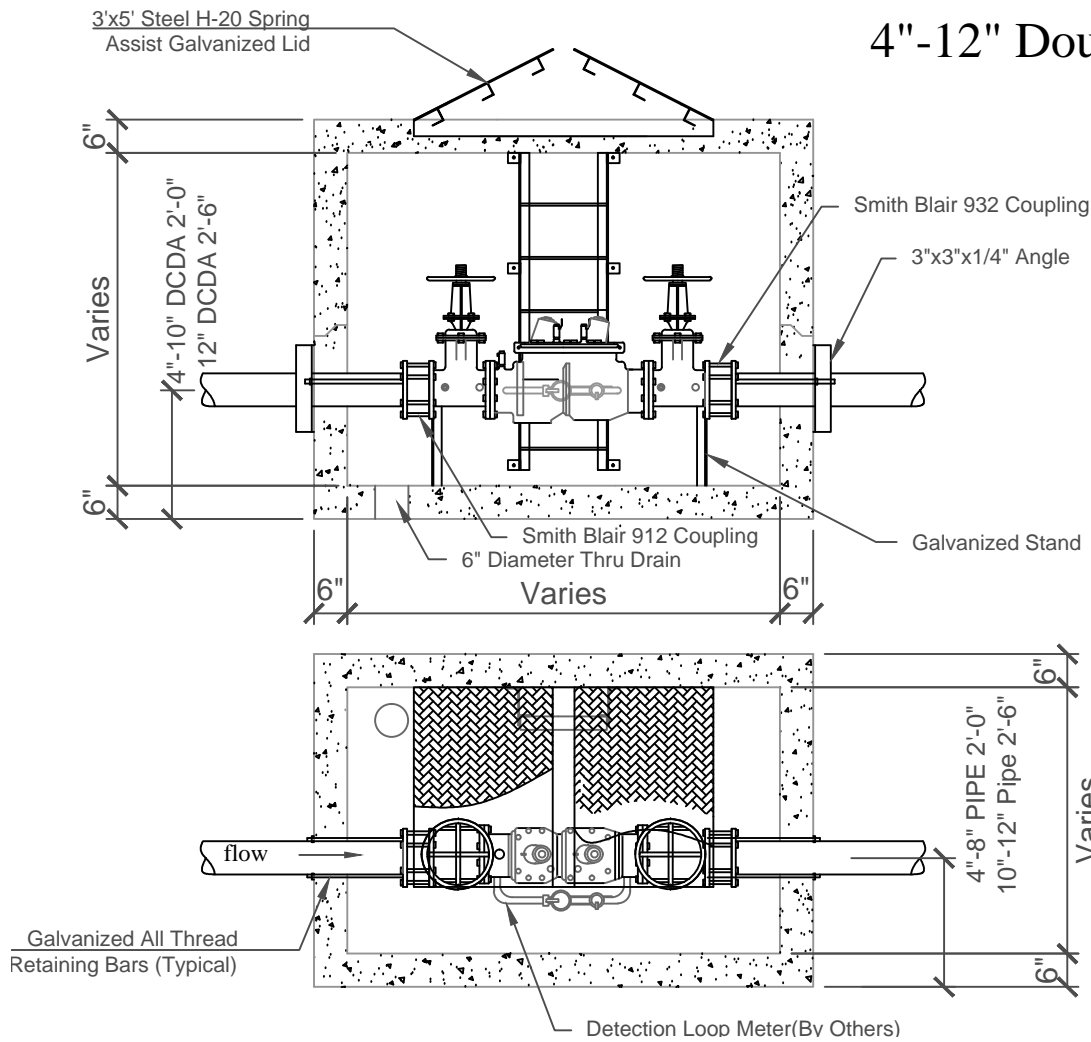


4"-12" Double Check Detector Assembly



- 1) APPROVED ASSEMBLIES ARE REQUIRED TO HAVE RESILIENT SEATED SHUT-OFF VALVES AND TEST COCKS AS INTEGRAL PARTS OF THE ASSEMBLIES OTHERWISE THE APPROVAL IS VOIDED.
- 2) ASSEMBLY MUST BE ACCESSIBLE FOR TESTING AND MAINTENANCE
- 3) INSTALLATION AND OPERATION MUST COMPLY WITH STANDARDS SET FORTH BY A.W.W.A. AND ALL FEDERAL, STATE, AND LOCAL LAWS, RULES, REGULATIONS, ORDERS, CODES AND ORDINANCES.
- 4) DCDA MUST MEET CURRENT CLWSC STANDARDS FOR BACKFLOW PREVENTION DEVICES. CONTACT CLWSC FOR LIST OF APPROVED DEVICES.
- 5) CONTRACTOR SHALL SUBMIT SHOP DRAWINGS AND OTHER INFORMATION AS NECESSARY FOR VAULT AND BACKFLOW DEVICE FOR APPROVAL PRIOR TO INSTALLATION. ORDINANCES.
- 6) THE FOLLOWING MANUFACTURES ARE PRE-APPROVED FOR BOTH VAULT AND BACKFLOW DEVICE REQUIREMENTS:
 CAPITAL PRECAST, INC.
 6905 S. OLD BASTROP HWY
 SAN MARCOS, TX 78666
 (830)-606-6200

DCDA SIZE AND DIMENSION (ID)

DCDA SIZE	Width	Length	Height
4"DCDA	4'-0"	6'-6"	5'-0"
6"DCDA	4'-0"	6'-6"	5'-0"
8"DCDA	4'-0"	6'-6"	5'-0"
10"DCDA	5'-0"	7'-0"	6'-0"
12"DCDA	5'-0"	10'-0"	7'-0"

GENERAL NOTES:

(1) FOR ADDITIONAL INFORMATION, SEE CANYON LAKE WATER SERVICE COMPANY'S STANDARD SPECIFICATIONS.

BY	REVISION	DATE	CK	AP	OPS



CANYON LAKE
 WATER SERVICE COMPANY
 1399 Sattler Road
 Canyon Lake, Texas 78133
 (830) 964-3854

APPROVED BELOW GRADE
 DOUBLE CHECK DETECTOR
 ASSEMBLY INSTALLATION

BY: BFW	OPERATIONS / DATE
DATE: 01-09-10	
CK:	ENGINEERING / DATE
SCALE: NONE	DIRECTOR OF ENGINEERING / DATE

REF. NOS.
D-5-651

DWG. NO.
BK-DCDA1

SHEET:
1 OF 1